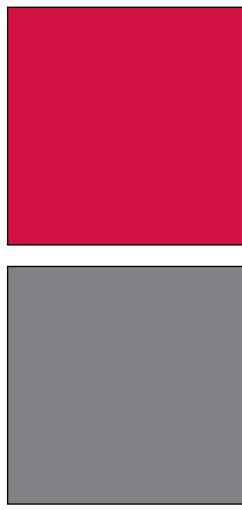
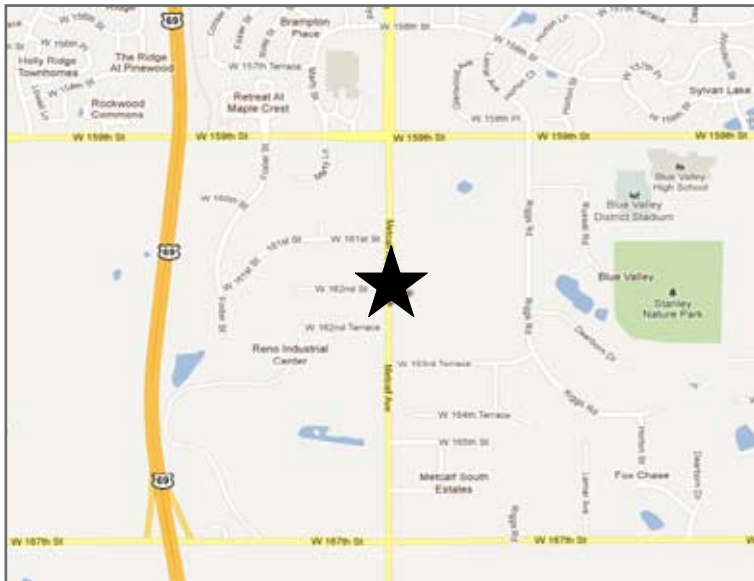


FLEX SPACE FOR LEASE
16234 Metcalf Avenue
Overland Park, Kansas

Building Information

- ±1,500 SF Available
- 100% Office
- \$8.00 PSF Gross Industrial
- Metcalf Signage
- Located on Metcalf Ave., south of 151st Street

For more information or to schedule a tour, give us a call.



NAI Capital Realty

Commercial Real Estate Services, Worldwide.

7500 College Boulevard • Suite 920 • Overland Park KS 66210

The information contained herein has been given to us by the owner of the property or other sources we deem reliable. We have no reason to doubt its accuracy, but we do not guarantee it. All information should be verified prior to purchase or lease.

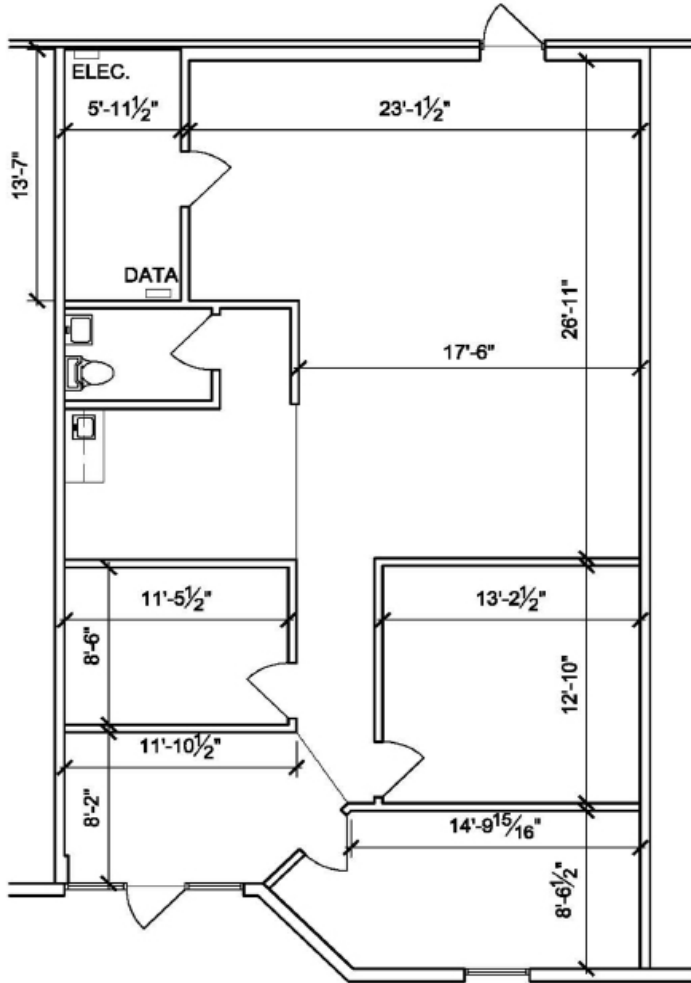
Kevin Wilkerson
913.469.4601 Direct
wilkerson@capital-kc.com

Phillip Algrim, SIOR
913.469.4605 Direct
algrim@capital-kc.com

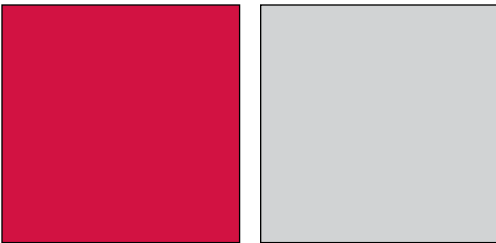
Erik Lund
913.469.4609 Direct
lund@capital-kc.com

www.capital-kc.com

16234 Metcalf Avenue
Overland Park, Kansas



1,500 SF Available



For more information or to schedule a tour,
give us a call.

Kevin Wilkerson
913.469.4601 Direct
wilkerson@capital-kc.com

Phillip Algrim, SIOR
913.469.4605
algrim@capital-kc.com

Erik Lund
913.469.4609
lund@capital-kc.com



Commercial Real Estate Services, Worldwide.

7500 College Boulevard • Suite 920 • Overland Park KS 66210



Commercial Real Estate Services, Worldwide.

**16234 Metcalf Ave.
Overland Park, Kansas**

Leasing Information:

Square Feet:	± 1,500	Lease Rate Per Month:	\$1,000.00
Office Square Feet:	100%	Lease Rate Per Square Foot:	± \$8.00
Warehouse Square Feet:		Lease Type:	Gross

Building Data:

Private Offices:	3	Clear Height:	Drop Ceiling
Restrooms:	1	Column Spacing:	N/A
Electrical Service:	TBD	Dock-High Doors:	N/A
Lighting:	Fluorescent	Size of Dock-High Doors:	N/A
Heating System:	N/A	Drive-In Doors:	N/A
Sprinkler System:	None	Size of Drive-In Doors:	N/A

Site Data:

Zoning:	PRB-3J	Gas:	Kansas Gas
Electricity:	KCPL	Sanitary Sewer:	Johnson County
Water:	Water One		Waste Water

For Additional Information Contact:

NAI Capital Realty
7500 College Blvd., Suite 920
Overland Park, Kansas 66210
913.469.4600, Fax: 913.469.4650

All information furnished concerning property for sale or lease is obtained from sources deemed reliable, but no warranty or representation is made as to the accuracy thereof and the same is submitted subject to errors, omissions, change of price, rental or other conditions, prior to sale or lease, or withdrawal without notice.