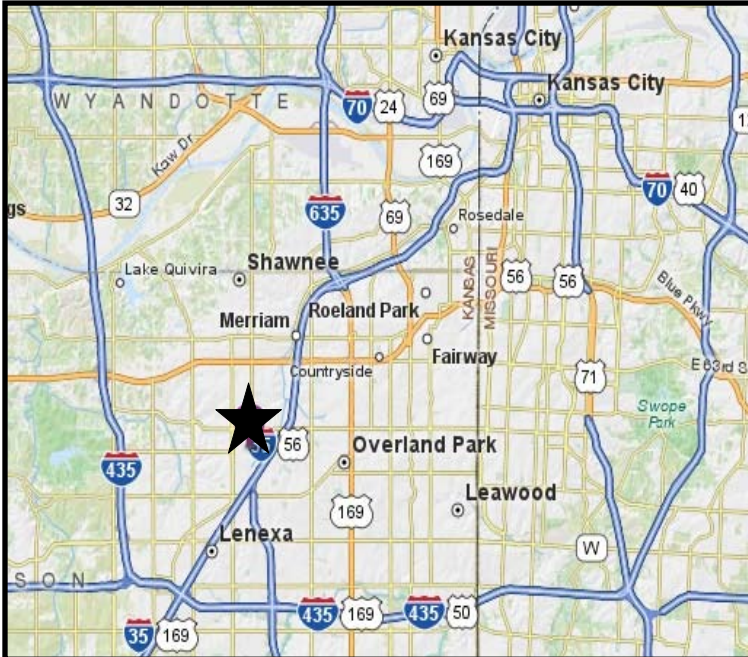


PROPERTY FOR LEASE

7864 BARTON
Lenexa, Kansas



Property Highlights

- 20,072 SF Available
- 12,000 SF Office
- 8,072 SF Warehouse
- \$9.35 PSF NNN
- Excellent Office/Warehouse Location
- Class A Interior Office Finishes
- 18' Clear Height
- 1 Dock High Door
- 1 Grade Level Door
- 42 Parking Spaces (expandable)
- Heavy Electrical Power Service
- BP-2 Zoning
- Located at the Hard Corner of 79th St. & Nieman Rd.
- Excellent I-35 Highway Access at 75th Street
- Abundant Services Nearby

For more information or to schedule a tour, give us a call.

Kevin Wilkerson
913.469.4601 Direct
wilkerson@capital-kc.com

Phillip Algrim, SIOR
913.469.4605
algrim@capital-kc.com

Erik Lund
913.469.4609
lund@capital-kc.com
www.capital-kc.com

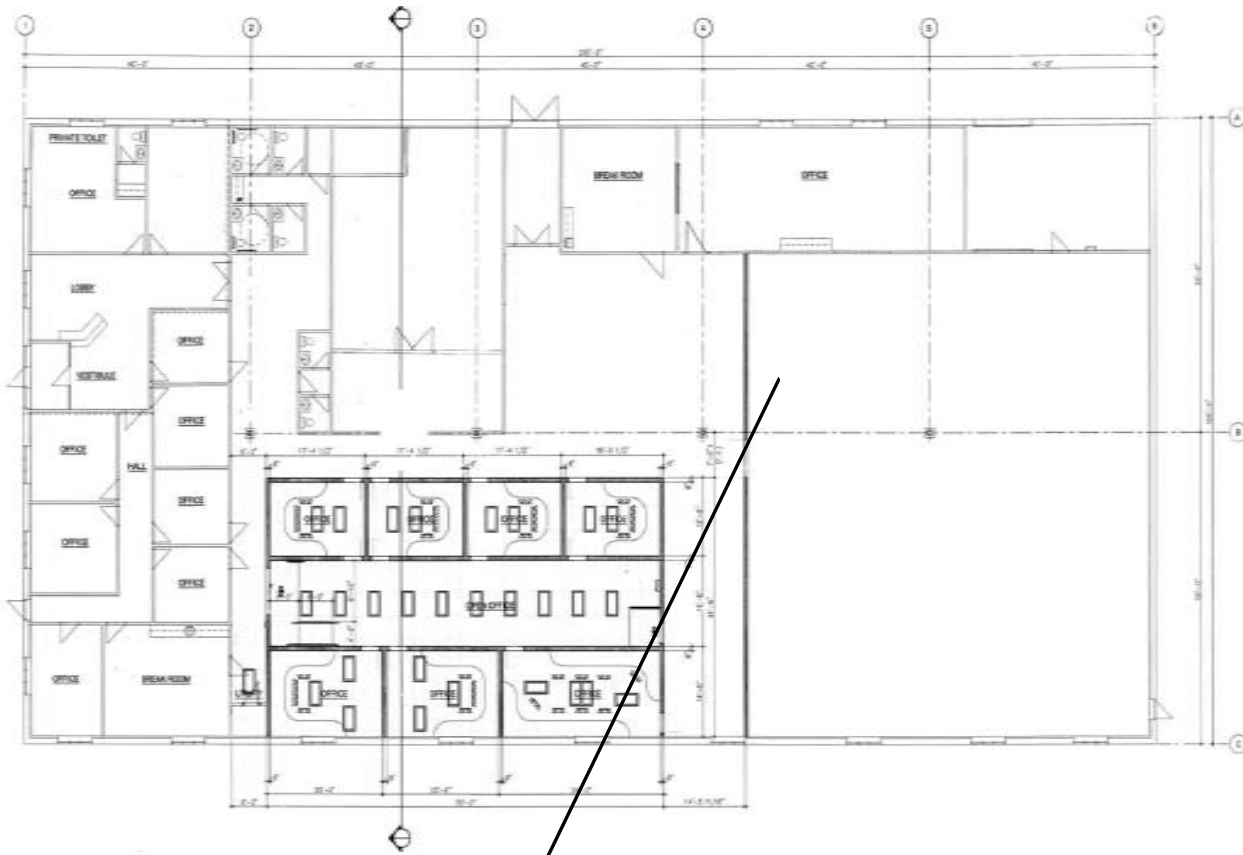
NAI Capital Realty

Commercial Real Estate Services, Worldwide.

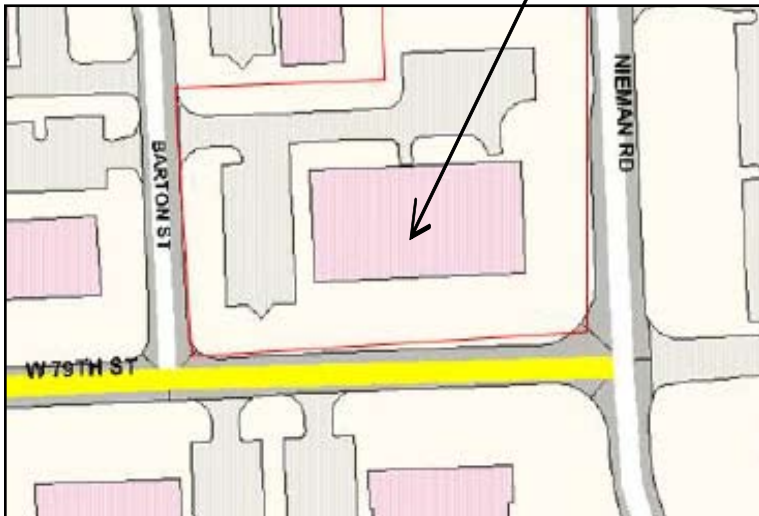
7500 College Boulevard • Suite 920 • Overland Park KS 66210

The information contained herein has been given to us by the owner of the property or other sources we deem reliable. We have no reason to doubt its accuracy, but we do not guarantee it. All information should be verified prior to purchase or lease.

7864 BARTON
Lenexa, Kansas



Floor Plan
20,072 SF



Site Plan

For more information or to schedule a tour,
give us a call.

Kevin Wilkerson
913.469.4601 Direct
wilkerson@capital-kc.com

Phillip Algrim, SIOR
913.469.4605
algrim@capital-kc.com

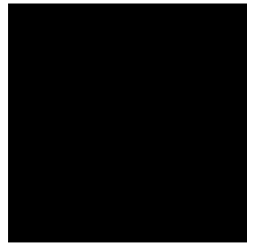
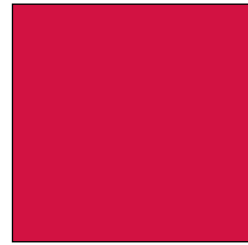
Erik Lund
913.469.4609
lund@capital-kc.com



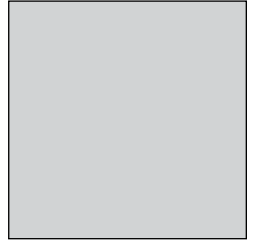
Commercial Real Estate Services, Worldwide.

7500 College Boulevard • Suite 920 • Overland Park KS 66210

7864 BARTON
Lenexa, Kansas



Accounting Dept.



Break Room



Conference Room

For more information or to schedule a tour,
give us a call.

Kevin Wilkerson
913.469.4601 Direct
wilkerson@capital-kc.com

Phillip Algrim, SIOR
913.469.4605
algrim@capital-kc.com

Erik Lund
913.469.4609
lund@capital-kc.com

NAI Capital Realty

Commercial Real Estate Services, Worldwide.

7500 College Boulevard • Suite 920 • Overland Park KS 66210

7864 BARTON
Lenexa, Kansas



Executive Private Office

Loading Area



Northeast Warehouse

For more information or to schedule a tour,
give us a call.

Kevin Wilkerson
913.469.4601 Direct
wilkerson@capital-kc.com

Phillip Algrim, SIOR
913.469.4605
algrim@capital-kc.com

Erik Lund
913.469.4609
lund@capital-kc.com

NAI Capital Realty

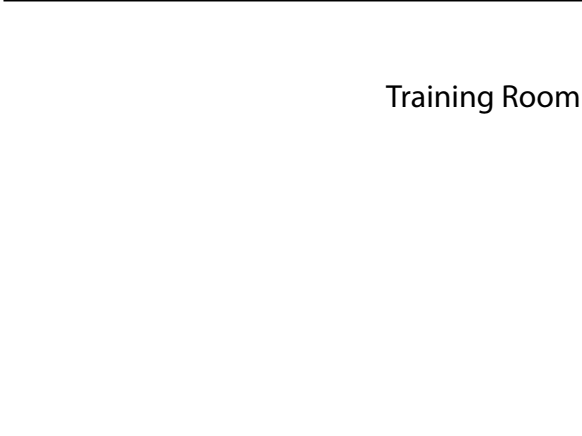
Commercial Real Estate Services, Worldwide.

7500 College Boulevard • Suite 920 • Overland Park KS 66210

7864 BARTON
Lenexa, Kansas



Southeast Warehouse



Training Room



Typical Open Office Area

For more information or to schedule a tour,
give us a call.

Kevin Wilkerson
913.469.4601 Direct
wilkerson@capital-kc.com

Phillip Algrim, SIOR
913.469.4605
algrim@capital-kc.com

Erik Lund
913.469.4609
lund@capital-kc.com

NAI Capital Realty

Commercial Real Estate Services, Worldwide.

7500 College Boulevard • Suite 920 • Overland Park KS 66210