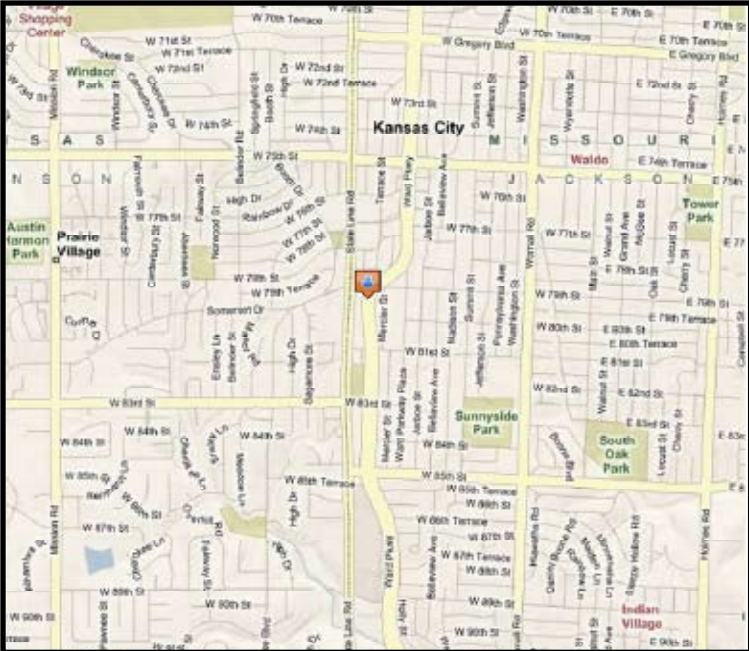
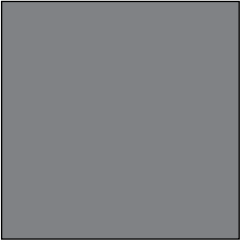
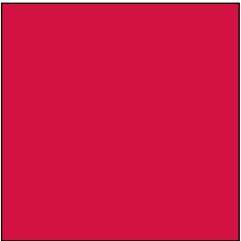


**PROPERTY FOR LEASE**  
**7920 WARD PARKWAY**  
**Kansas City, MO 64114**

**Property Highlights**

- Convenient Ward Parkway location
- Two (2) suites available:  
 Suite 225: 1,310 RSF  
 Suite 275: 410 RSF
- Numerous retail and support services nearby
- 4:1,000 parking
- Newly renovated building
- On-site property management and ownership
- Building training room
- Building break area

For more information or to schedule a tour, give us a call.



**Jeffrey C. Kembel, SIOR**  
 913.469.4604 Direct  
 kembel@capital-kc.com

**Patrick Meraz, CCIM**  
 913.469.4622 Direct  
 meraz@capital-kc.com

[www.capital-kc.com](http://www.capital-kc.com)

**NAI Capital Realty**

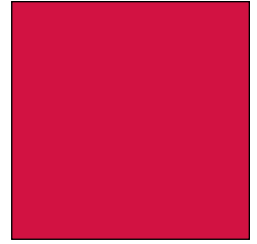
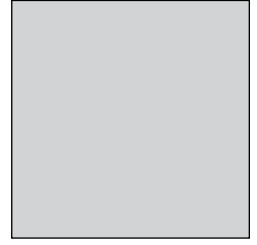
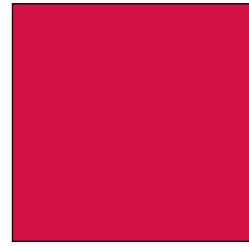
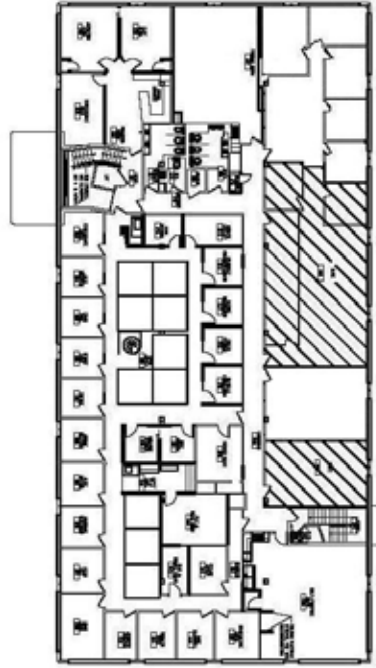
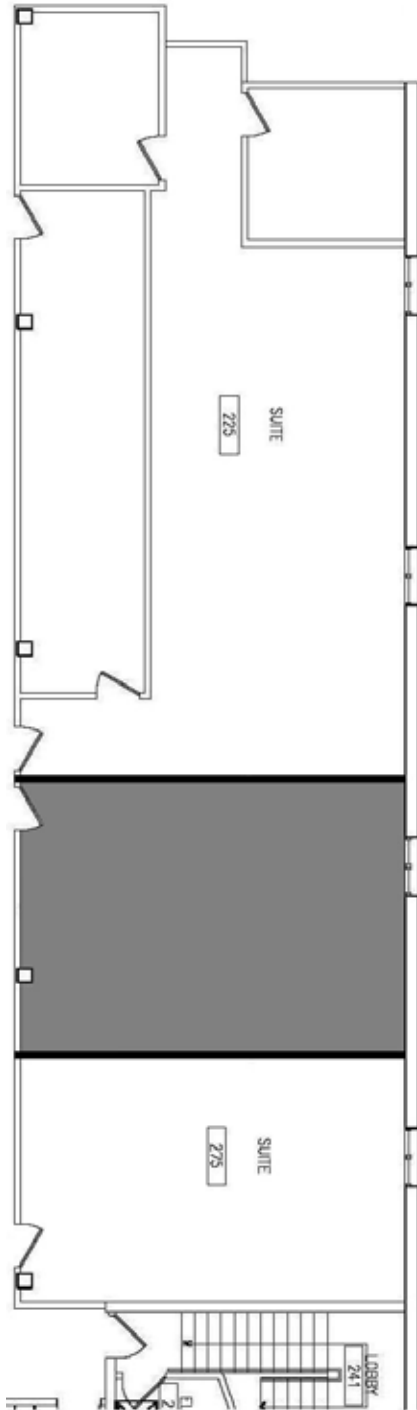
Commercial Real Estate Services, Worldwide.

7500 College Boulevard • Suite 920 • Overland Park KS 66210

The information contained herein has been given to us by the owner of the property or other sources we deem reliable. We have no reason to doubt its accuracy, but we do not guarantee it. All information should be verified prior to purchase or lease.

# OFFICE SPACE FOR LEASE

7920 Ward Parkway  
Kansas City, Missouri



**Suite 225: 1,310 RSF**

**Suite 275: 410 RSF**

For more information or to schedule a tour,  
give us a call.

Jeffrey C. Kembel, SIOR  
913.469.4604 Direct  
kembel@capital-kc.com

Patrick Meraz, CCIM  
913.469.4622 Direct  
meraz@capital-kc.com



Commercial Real Estate Services, Worldwide.

7500 College Boulevard • Suite 920 • Overland Park KS 66210