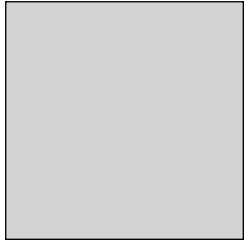
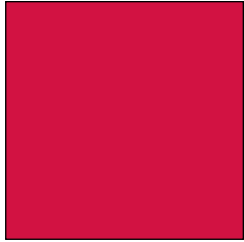


**1,267 RSF
Available
Now**



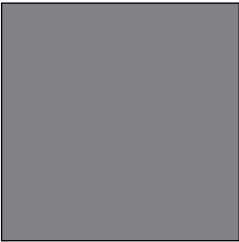
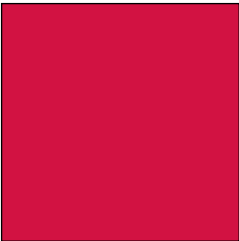
**2,137 RSF
Available
3/2012**



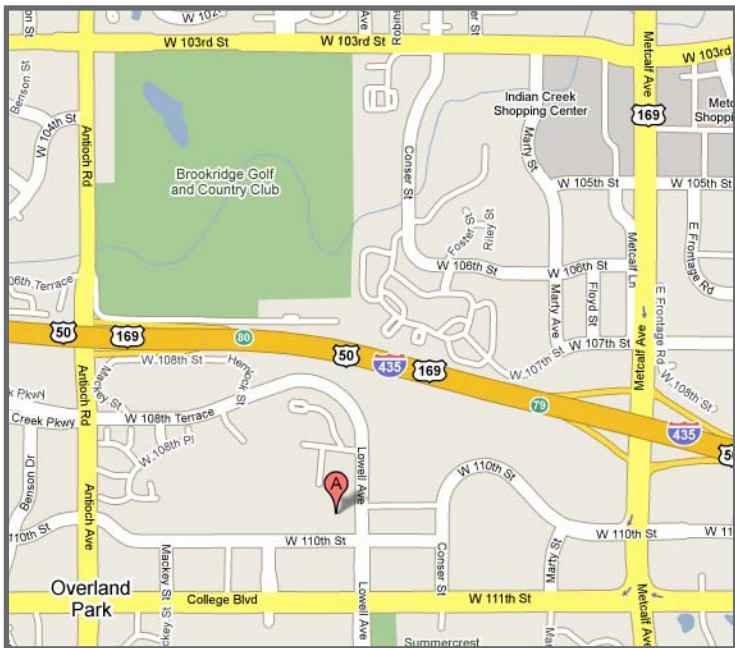
**ADM Building
8000 West 110th Street
Overland Park, Kansas**

Property Highlights

- College Boulevard Corridor with easy interstate access at Antioch or Metcalf
- Two great corner suites on the first floor
- 5.0 spaces per 1,000 SF parking ratio
- Common area break room conveniently located on first floor
- Professional tenant mix in a quiet, pleasant work environment
- Onsite ownership
- Walk to restaurants and shops



For more information or to schedule a tour, give us a call.



NAI Capital Realty

Commercial Real Estate Services, Worldwide.

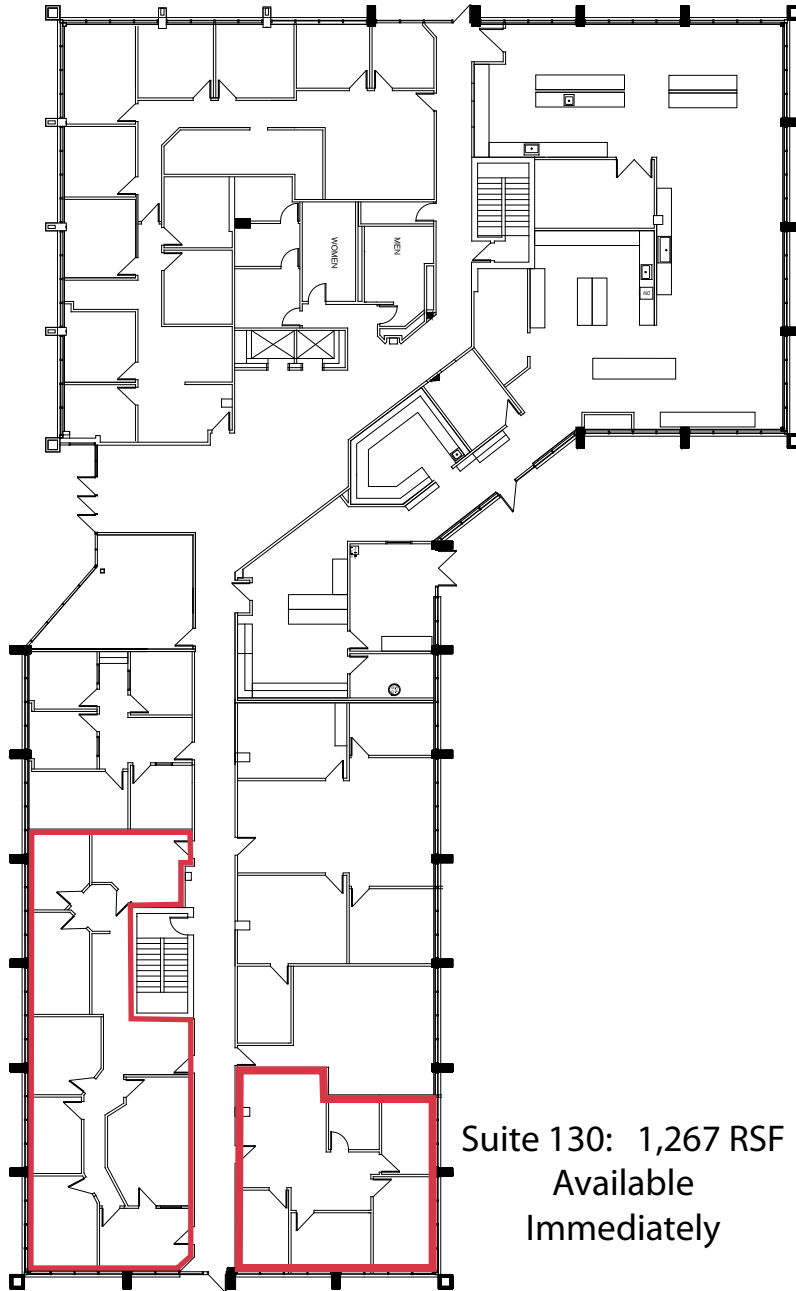
7500 College Boulevard • Suite 920 • Overland Park KS 66210

Robert A. Keatley, SIOR
913.469.4606 Direct
keatley@capital-kc.com

www.capital-kc.com

The information contained herein has been given to us by the owner of the property or other sources we deem reliable. We have no reason to doubt its accuracy, but we do not guarantee it. All information should be verified prior to purchase or lease.

8000 West 110th Street
Overland Park, Kansas



Suite 150: 2,137 RSF
Available
March 2012

Suite 130: 1,267 RSF
Available
Immediately

For more information or to schedule a tour,
give us a call.

NAI Capital Realty

Commercial Real Estate Services, Worldwide.

7500 College Boulevard • Suite 920 • Overland Park KS 66210

Robert A. Keatley, SIOR
913.469.4606 Direct
keatley@capital-kc.com

www.capital-kc.com