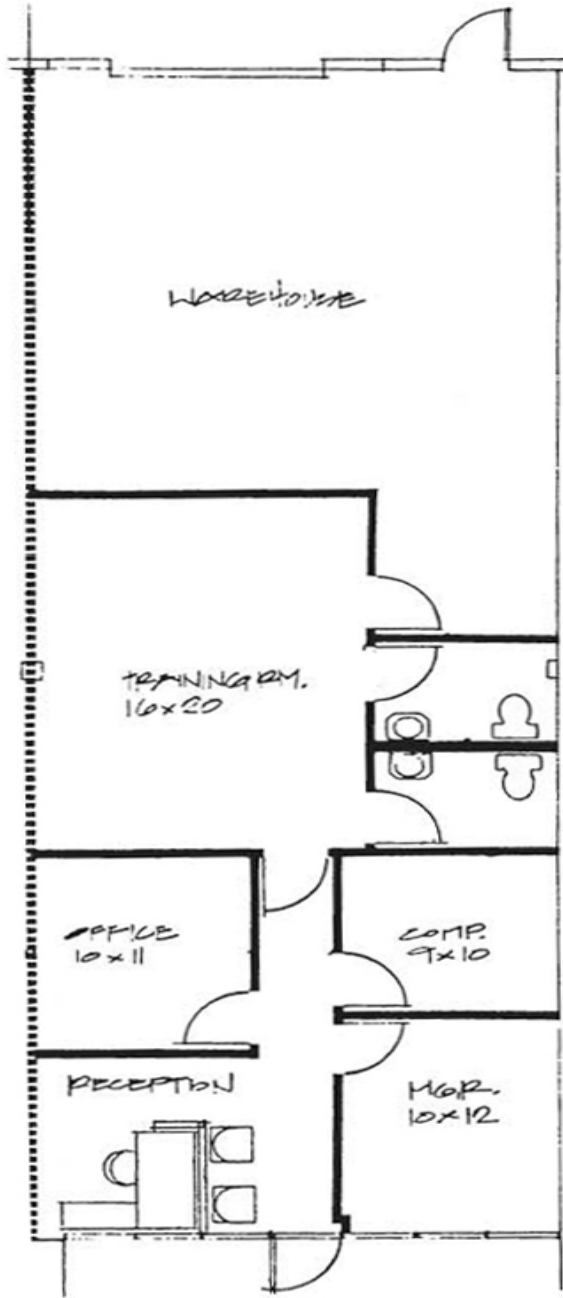


WESTBROOK II

8014 Reeder
Lenexa, Kansas



1,736 SF

For more information or to schedule a tour,
give us a call.

Kevin Wilkerson
913.469.4601 Direct
wilkerson@capital-kc.com

Phillip Algrim, SIOR
913.469.4605
algrim@capital-kc.com

Erik Lund
913.469.4609
lund@capital-kc.com

NAI Capital Realty

Commercial Real Estate Services, Worldwide.

7500 College Boulevard • Suite 920 • Overland Park KS 66210



**Westbrook II
8014 Reeder
Lenexa, Kansas 66214**

Leasing Information:

Square Feet:	± 1,736 sq. ft.	Lease Rate Per Month:	\$1,519.00
Office Square Feet:	± 750 sq. ft.	Lease Rate Per Square Foot:	± \$10.50
Warehouse Square Feet:	± 986 sq. ft.	Lease Type:	Gross

Building Data:

Private Offices:	3	Clear Height:	14'
Restrooms:	2	Column Spacing:	Varies
Electrical Service:	Three Phase	Dock High Doors:	N/A
Warehouse Lighting System:	Fluorescent Strip	Size of Dock High Doors:	N/A
Warehouse Heating System:	F.A.G.	Drive In Doors:	1
Sprinkler System:	Wet	Size of Drive In Doors:	10' x 12'

Site Data:

Zoning:	BP-2	Gas:	KPL
Electricity:	KCPL	Sanitary Sewer:	Johnson County
Water:	Johnson County		

For Additional Information Contact:

NAI Capital Realty

7500 College Blvd., Suite 920
Overland Park, Kansas 66210
913.469.4600, Fax: 913.469.4650