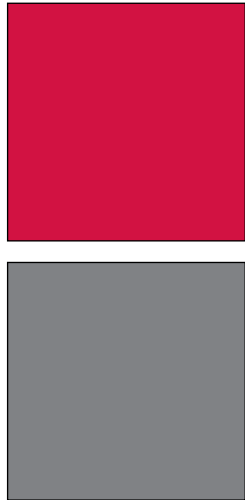
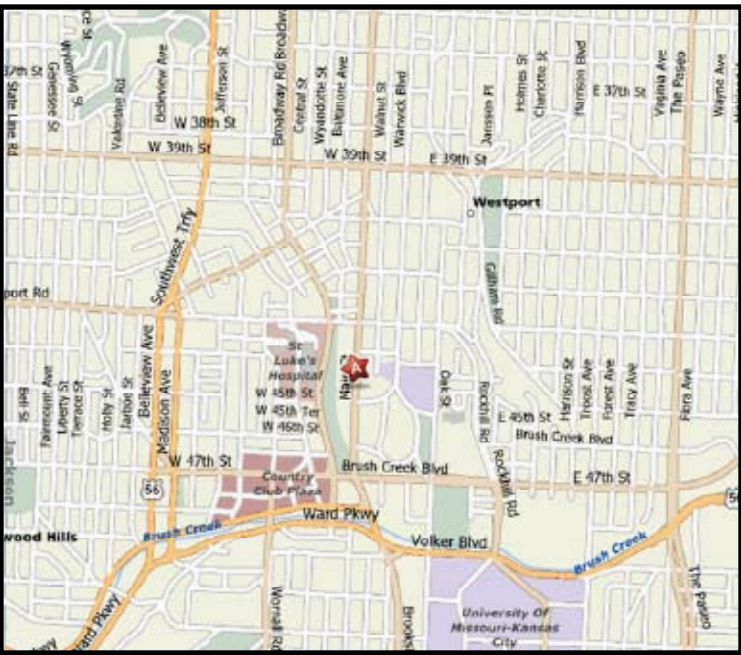


CLASS A OFFICE SPACE FOR LEASE
ONE MAIN PLAZA
 4435 Main Street
 Kansas City, Missouri

793 to 54,361 RSF Available

- From 1,229 to 20,563 contiguous square feet available on one floor
- 182,245 RSF building
- 11 floors
- Covered parking
- 3:1,000 parking ratio
- Owned and managed by American Century
- Entire building backed up by generator
- 24-hour security
- Conveniently located one block off the Country Club Plaza

For more information or to schedule a tour, give us a call.



NAI Capital Realty
 Commercial Real Estate Services, Worldwide.
 7500 College Boulevard • Suite 920 • Overland Park KS 66210

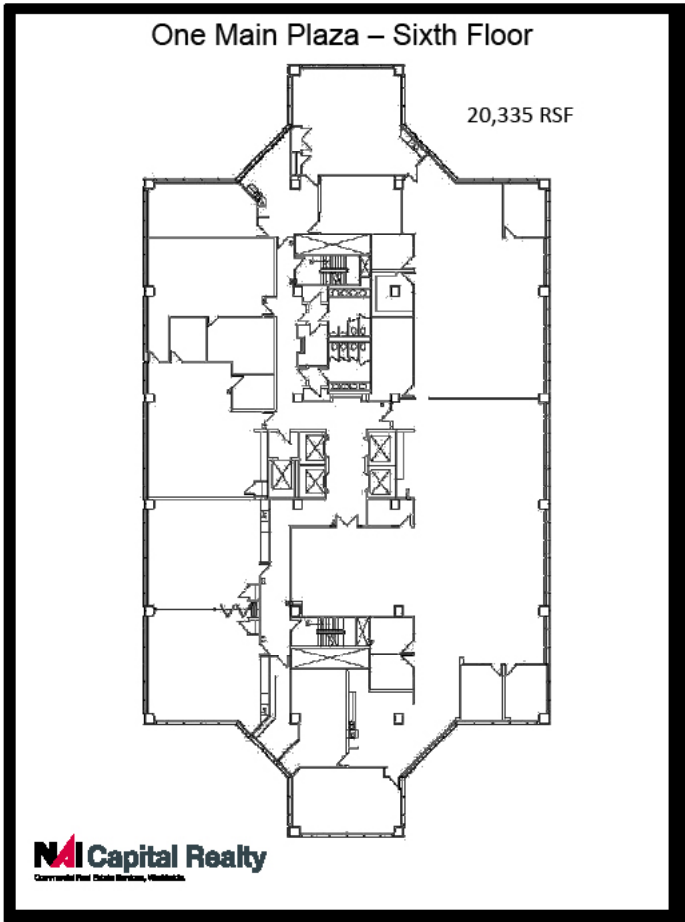
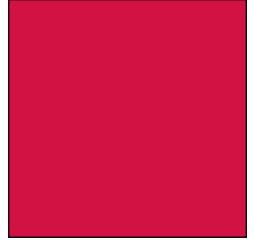
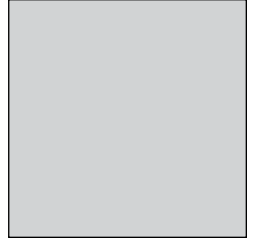
Jeffrey C. Kembel, SIOR
 913.469.4604 Direct
 kembel@capital-kc.com

R. Matthew Kiehne, CCIM
 913.469.4624 Direct
 kiehne@capital-kc.com

www.capital-kc.com

The information contained herein has been given to us by the owner of the property or other sources we deem reliable. We have no reason to doubt its accuracy, but we do not guarantee it. All information should be verified prior to purchase or lease.

CLASS A OFFICE SPACE FOR LEASE
ONE MAIN PLAZA
4435 Main Street
Kansas City, Missouri



For more information or to schedule a tour,
give us a call.

Jeffrey C. Kembel, SIOR
913.469.4604 Direct
kembel@capital-kc.com

R. Matthew Kiehne, CCIM
913.469.4624 Direct
kiehne@capital-kc.com

NAI Capital Realty

Commercial Real Estate Services, Worldwide.

7500 College Boulevard • Suite 920 • Overland Park KS 66210

www.capital-kc.com