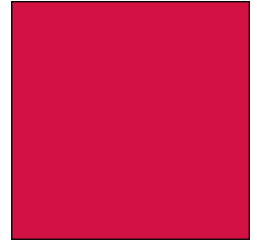
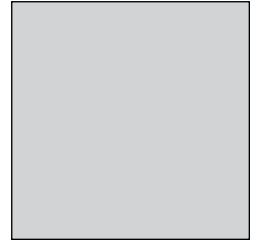
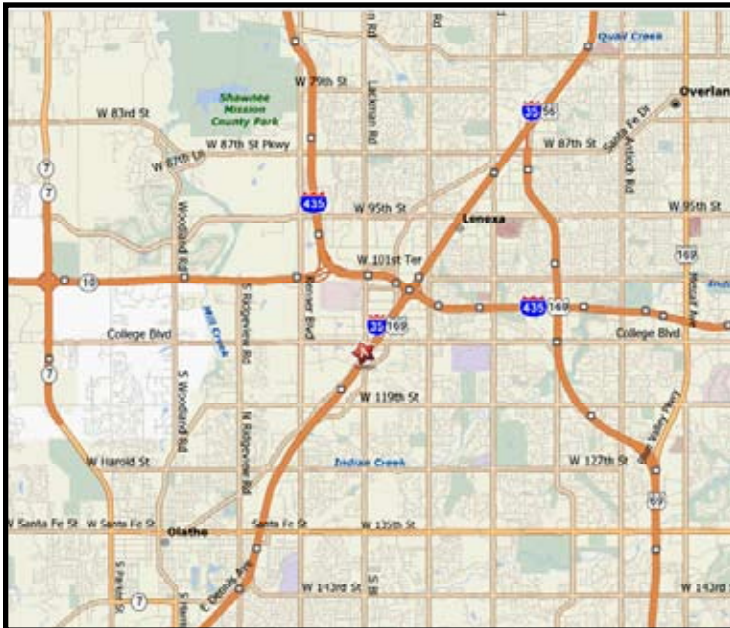




CLASS A OFFICE SPACE FOR LEASE

WATERSIDE THREE

15200 Santa Fe Drive
Lenexa, Kansas



Suite 102 4,046 RSF Available

Property Highlights

- 60,454 square foot Class A office building
- Located in the prestigious Southlake Technology Park
- Free parking with 5:1000 ratio
- Dual fiber and redundant power
- Office park contains, on-site management, licensed day-care center, and the Lenexa Conference Center
- Excellent access to I-35, I-435, & K-10
- Situated amongst 40 landscaped acres, 4 miles of jogging/walking trails, and 10 lakes

For more information or to schedule a tour, give us a call.

Jeffrey C. Kembel
913.469.4604 Direct
kembel@capital-kc.com

Matthew D. Hanson
913.469.4607 Direct
hanson@capital-kc.com

www.capital-kc.com



Commercial Real Estate Services, Worldwide.

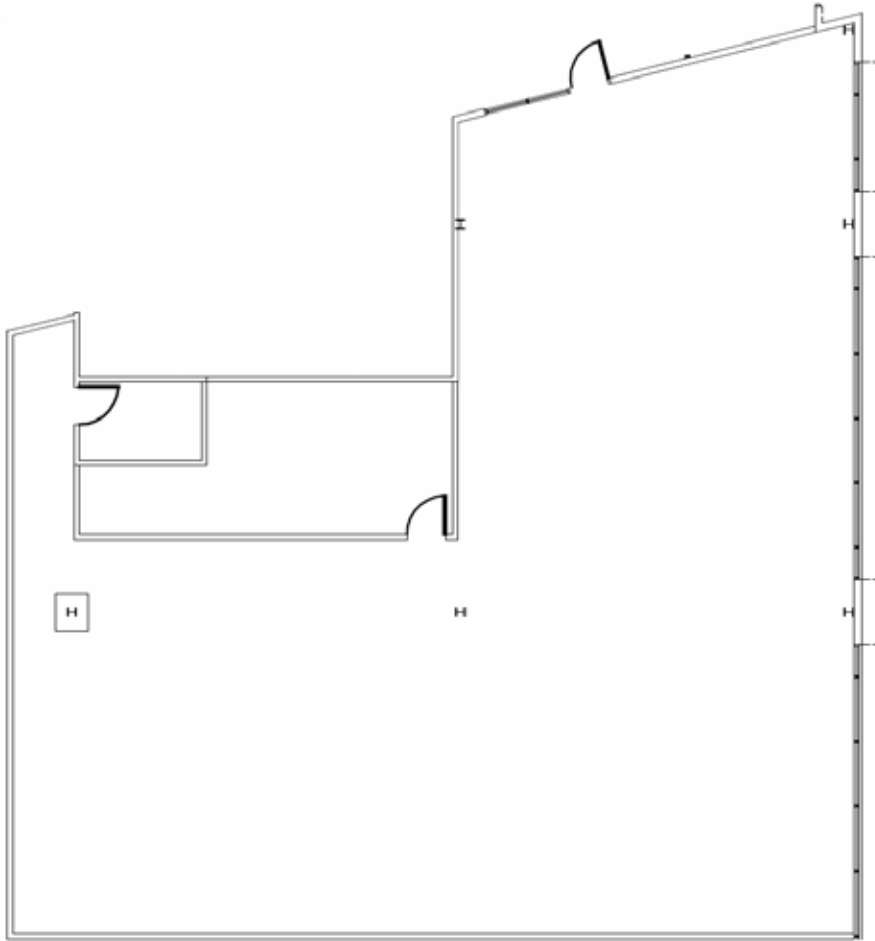
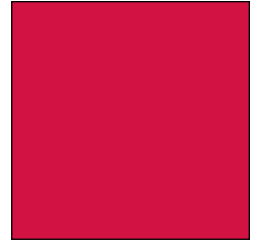
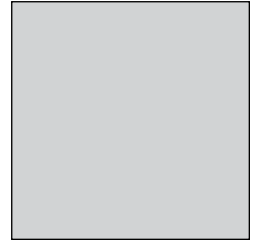
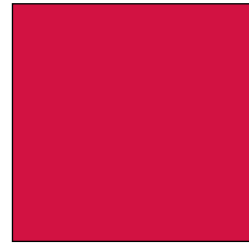
7500 College Boulevard • Suite 920 • Overland Park KS 66210

The information contained herein has been given to us by the owner of the property or other sources we deem reliable. We have no reason to doubt its accuracy, but we do not guarantee it. All information should be verified prior to purchase or lease.

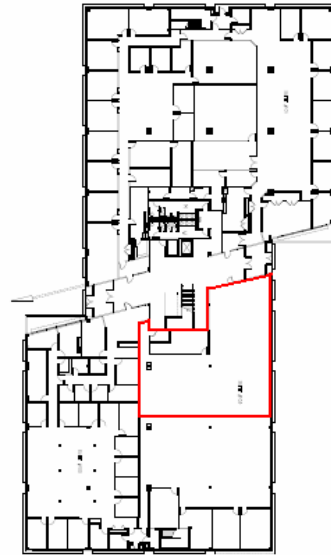
CLASS A OFFICE SPACE FOR LEASE

WATERSIDE THREE

15200 Santa Fe Drive
Lenexa, Kansas



Suite 102
4,046 RSF



For more information or to schedule a tour,
give us a call.

Jeffrey C. Kembel
913.469.4604 Direct
kembel@capital-kc.com

Matthew D. Hanson
913.469.4607 Direct
hanson@capital-kc.com

NAI Capital Realty

Commercial Real Estate Services, Worldwide.

7500 College Boulevard • Suite 920 • Overland Park KS 66210

www.capital-kc.com