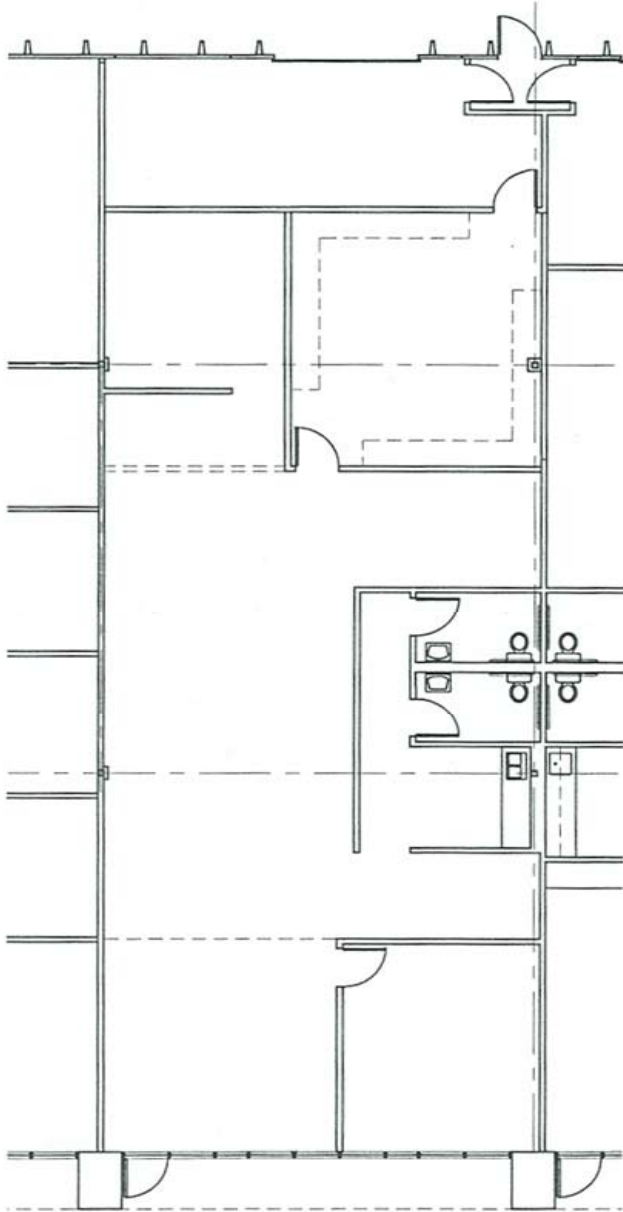
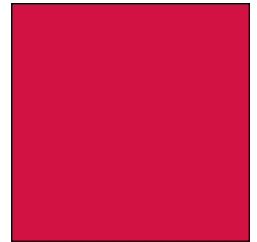
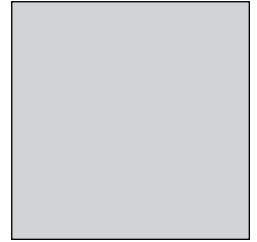


WESTBROOK II

8002 Reeder
Lenexa, Kansas



2,809 SF

For more information or to schedule a tour,
give us a call.

Kevin Wilkerson
913.469.4601 Direct
wilkerson@capital-kc.com

Phillip Algrim, SIOR
913.469.4605
algrim@capital-kc.com

Erik Lund
913.469.4609
lund@capital-kc.com

NAI Capital Realty

Commercial Real Estate Services, Worldwide.

7500 College Boulevard • Suite 920 • Overland Park KS 66210



**Westbrook II
8002 Reeder
Lenexa, Kansas 66214**

Leasing Information:

Square Feet:	± 2,809 sq. ft.	Lease Rate Per Month:	\$2,457.88
Office Square Feet:	± 2,445 sq. ft.	Lease Rate Per Square Foot:	± \$10.50
Warehouse Square Feet:	± 364 sq. ft.	Lease Type:	Gross

Building Data:

Private Offices:	1	Clear Height:	14'
Restrooms:	2	Column Spacing:	Varies
Electrical Service:	Three Phase	Dock High Doors:	N/A
Warehouse Lighting System:	Fluorescent Strip	Size of Dock High Doors:	N/A
Warehouse Heating System:	F.A.G.	Drive In Doors:	1
Sprinkler System:	Wet	Size of Drive In Doors:	10' x 12'

Site Data:

Zoning:	BP-2	Gas:	KPL
Electricity:	KCPL	Sanitary Sewer:	Johnson County
Water:	Johnson County		

For Additional Information Contact:

NAI Capital Realty

7500 College Blvd., Suite 920
Overland Park, Kansas 66210
913.469.4600, Fax: 913.469.4650

All information furnished concerning property for sale or lease is obtained from sources deemed reliable, but no warranty or representation is made as to the accuracy thereof and the same is submitted subject to errors, omissions, change of price, rental or other conditions, prior to sale or lease, or withdrawal without notice.